

# Web Tracks 2017 Installation Guide

## NEW INSTALLATION INSTRUCTIONS:

### Step 1 – Install Web Tracks

1. Choose a computer on which to install Web Tracks. The computer must meet the following system requirements:
  - a. The computer must have IIS version 5.1 or newer installed (see IIS Settings on Page 2).
  - b. IIS must be configured to serve ASP.NET and Static Content (see IIS Settings on Page 2).
  - c. If you plan on using one of the 'Auto Sign In' authentication modes IIS must have the 'Windows Authentication' feature installed (see IIS Settings on Page 2).
  - d. The Computer must have the Microsoft .NET Framework version 4 or 4.5 installed (if not installed the installer will install version 4.0 as a prerequisite).
2. Install Web Tracks on this computer by double-clicking the downloaded executable file.

### Step 2 – Database Setup

1. Open Web Tracks from a browser on the computer where Web Tracks is installed.
2. Follow the Setup Wizard's instructions to connect to a new database or an existing database.

### Step 3 – Create Shortcuts/Links to Web Tracks for users who need to access this application\*

- The default URL will be <http://YourServerName/WebTracks>

*\* Applies to new installations -- if you have Windows Firewall enabled you may need to allow the program 'World Wide Web Services (HTTP)' or open port 80 so that remote computers can access web pages served by your IIS server.*

## UPGRADE INSTRUCTIONS (from a previous version of Web Tracks):

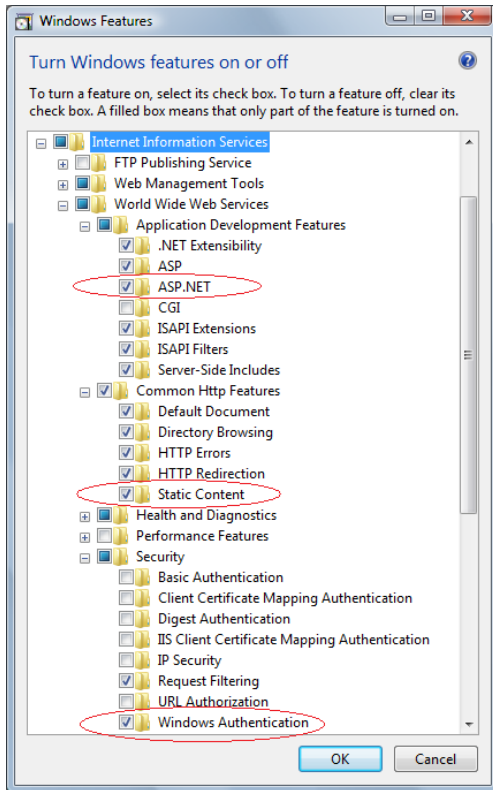
1. Run the Web Tracks setup executable on the same computer where the prior version of Web Tracks is installed.
2. When following the installation Wizard, be sure to install to the same folder as your previous installation (the default installation folder is C:\Program Files (x86)\Gritware\Web Tracks).
3. Open Web Tracks\*

\* If the upgrade requires a database schema change, Web Tracks will display a note on the site that the database is incompatible with the current version. Follow the link to 'Upgrade my Database to Work with this Version' to complete the upgrade process. Minor updates do not involve schema changes. For example, upgrading from 9.10 to 9.11 would not require a schema change while upgrading from 9.03 to 9.10 would.

## IIS Settings (for IIS 7+)

### Windows 7+

Open 'Control Panel → Programs and Features → Turn Windows Features on or off'. Expand 'Internet Information Services → World Wide Web Services' and verify the circled features are checked.



### Windows Server 2008

Open Server Manager – Roles – Scroll to Web Server. Under Security verify the circled features are installed.

